

CABRILLO HIGHWAY

VALLEMAR STREET

JULIANA AVENUE

SHEET NOTES

- 1 PROTECT ALL CUT AND FILL SLOPES WITH EROSION CONTROL FABRIC AND OR MULCH
- 2 PROTECT ALL STORM DRAIN SYSTEMS AND BIOSWALES FROM SEDIMENT DURING CONSTRUCTION WITH FABRIC INLET COVERS AND OR GRAVEL BAG BERMS, TYP
- 3 PROTECT DITCH FROM SEDIMENT DURING CONSTRUCTION WITH SILT FENCES AND/OR FIBER ROLLS
- 4 PREVENT CONCENTRATED RUNOFF FROM FLOWING OVER SLOPE
- 5 TEMPORARY SILT FENCE
- 6 TREE PROTECTION, TEMPORARY FENCE (TYPE ESA) PER CALTRANS STANDARD PLAN T65, REMOVE FENCE FOLLOWING APPROVAL OF FINAL STABILIZATION

REV	DESCRIPTION	DATE	BY
1	PLANNING PERMIT SUBMITTAL	9/1/2015	RTC
2	DESIGN REVIEW SUBMITTAL	8/20/2016	RTC
3	FOUR LOT PLANNING SUBMITTAL	4/26/2017	RTC
4	LOT 1 REVISIONS	8/23/2017	RTC



PRELIMINARY
NOT FOR
CONSTRUCTION

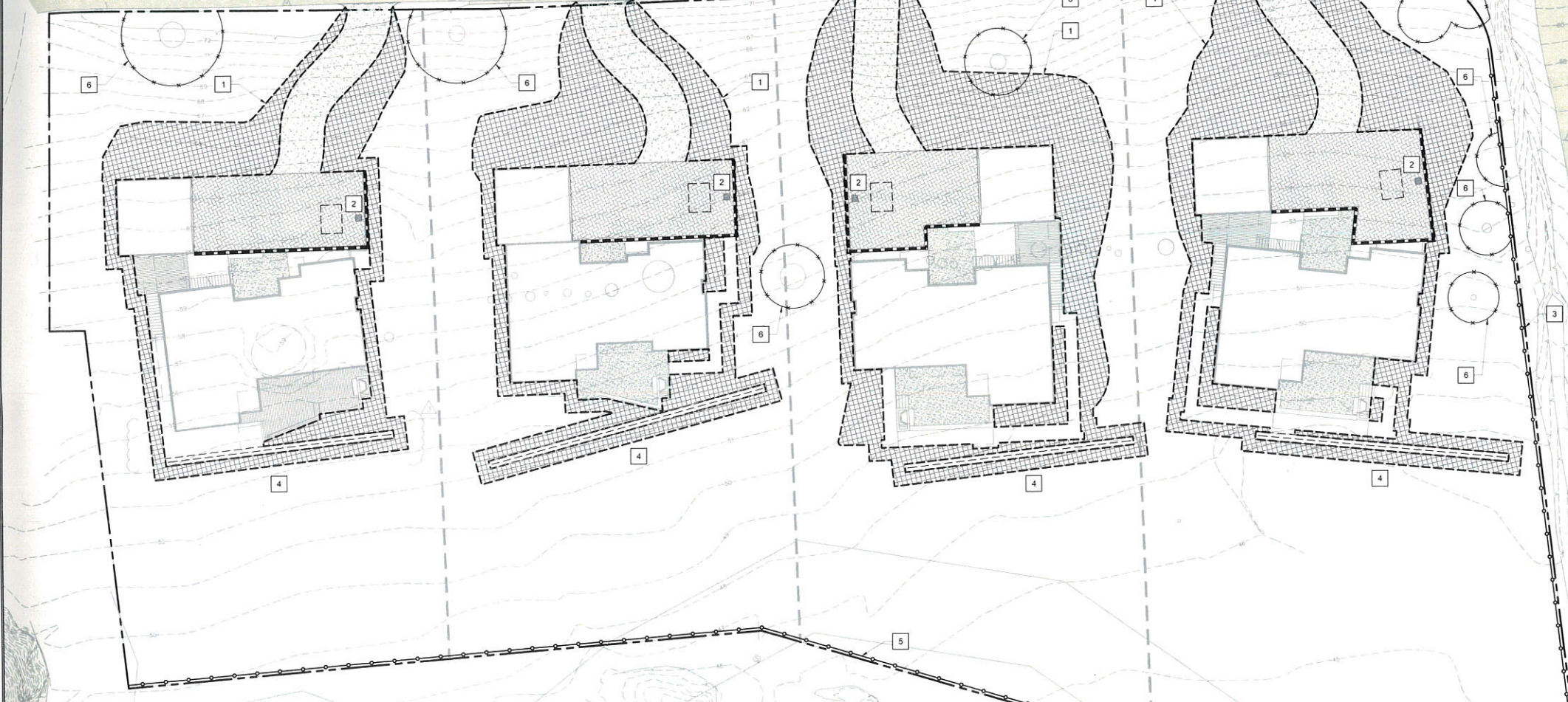
VALLEMAR STREET & JULIANA AVENUE
MOSS BEACH, CALIFORNIA

PREPARED AT THE REQUEST OF
MOSS BEACH ASSOCIATES
612 SPRING ST.
SANTA CRUZ, CA 95060

EROSION CONTROL PLAN

DRAWN BY: DAM
CHECKED BY: RTC
JOB NUMBER: 15147
SHEET

C6.0



CONSTRUCTION BEST MANAGEMENT PRACTICES

- GENERAL**
- CONTROL AND PREVENT THE DISCHARGE OF ALL POTENTIAL POLLUTANTS, INCLUDING PAVEMENT CUTTING WASTES, PAINTS, CONCRETE, PETROLEUM PRODUCTS, CHEMICALS, WASHWATER OR SEDIMENTS, RINSE WATER FROM ARCHITECTURAL COPPER, AND NON-STORMWATER DISCHARGES TO STORM DRAINS AND WATERCOURSES.
 - STORE, HANDLE, AND DISPOSE OF CONSTRUCTION MATERIALS/WASTES PROPERLY TO PREVENT CONTACT WITH STORMWATER.
 - DO NOT CLEAN, FUEL, OR MAINTAIN VEHICLES ON-SITE, EXCEPT IN A DESIGNATED AREA WHERE WASHWATER IS CONTAINED AND TREATED.
 - TRAIN AND PROVIDE INSTRUCTION TO ALL EMPLOYEES/SUBCONTRACTORS RE: CONSTRUCTION BMPs.
 - PROTECT ALL STORM DRAIN SYSTEMS IN VICINITY OF SITE USING FABRIC INLET COVERS, FIBER ROLLS, AND SILT FILTERS SUCH AS BERMS, FIBER ROLLS, AND SILT FILTERS TO LIMIT CONSTRUCTION DEBRIS FROM ENTERING STORM DRAIN SYSTEMS.
 - STABILIZE DESIGNATED ACCESS POINTS.
 - PERFORM CLEARING AND EARTH MOVING ACTIVITIES ONLY DURING DRY WEATHER.
 - USE SEDIMENT CONTROL MEASURES TO REMOVE SEDIMENT FROM EROSION CONTROL MEASURES.
 - OBTAIN ALL NECESSARY PERMITS AND TRAP SEDIMENT ON-SITE, USING BMPs SUCH AS SEDIMENT BASINS OR TRAPS, EARTHEN DIKES OR BERMS, SILT FENCES, CHECK DAMS, SOIL BLANKETS OR MATS, COVERS FOR SOIL STOCK PILES, ETC.
 - DIVERT ON-SITE RUNOFF AROUND EXPOSED AREAS, DIVERT OFF-SITE RUNOFF AROUND THE SITE (E.G., SWALES AND DIKES).

- PROTECT ADJACENT PROPERTIES AND UNDISTURBED AREAS FROM CONSTRUCTION IMPACTS USING VEGETATIVE BUFFER STRIPS, SEDIMENT BARRIERS OR FILTERS, DIKES, MULCHING, OR OTHER MEASURES AS APPROPRIATE.
- NO LAND CLEARING OPERATIONS OR GRADING OPERATIONS MAY TAKE PLACE BETWEEN OCTOBER 15 AND APRIL 15 UNLESS A SEPARATE WINTER EROSION CONTROL PLAN IS APPROVED PRIOR TO BEGINNING SUCH CONSTRUCTION.
- EROSION IS TO BE CONTROLLED AT ALL TIMES. THE SPECIFIC MEASURES SHOWN ARE TO BE IMPLEMENTED AT ALL TIMES. ADDITIONAL MEASURES WILL BE REQUIRED FOR CONSTRUCTION BETWEEN OCTOBER 15 AND APRIL 15.
- EROSION CONTROL MEASURES SHALL BE MONITORED, MAINTAINED, AND REPLACED AS NEEDED TO PREVENT ESCAPE OF SEDIMENT FROM THE SITE. NO TURBID RUNOFF SHALL BE ALLOWED TO LEAVE THE CONSTRUCTION SITE.

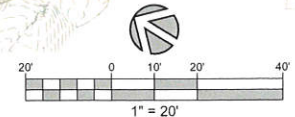
- PROTECTION OF DISTURBED AREAS:**
- EROSION CONTROL MEASURES SHALL BE IMPLEMENTED AS SOON AS PRACTICAL SO THAT SUFFICIENT GROWTH WILL BE ESTABLISHED PRIOR TO INCLEMENT WEATHER CONDITIONS AND CONTINUALLY MAINTAINED TO MINIMIZE SURFACE EROSION. ALL DISTURBED AREAS SHALL BE HYDROSEEDING USING A NATIVE SEED MIX AND MULCHED SO THAT THE DISTURBED AREAS ARE PROTECTED BY MATURE GRASS PRIOR TO OCTOBER 15. IN THE EVENT THAT IT IS NOT POSSIBLE TO ESTABLISH MATURE GRASS BY OCTOBER 15TH, ALL DISTURBED AREAS SHALL BE HYDROSEEDING, MULCHED, AND PROTECTED BY EROSION CONTROL BLANKETS INSTALLED IN ACCORDANCE WITH THE MANUFACTURER'S INSTRUCTIONS. EROSION CONTROL BLANKETS SHALL BE REED & GRAHAM WOVEN JUTE MESH 0.9 #YD/1 OR EQUAL.
 - BETWEEN OCTOBER 15 AND APRIL 15, EXPOSED SOIL SHALL BE PROTECTED FROM EROSION AT ALL TIMES. DURING CONSTRUCTION ALL DISTURBED SLOPES NOT ACTIVELY USED FOR CONSTRUCTION WILL BE SEEDED, MULCHED, AND BLANKETED. HAY BALES, FILTER BERMS, SILT FENCE(S) SHALL BE EMPLOYED TO TRAP SEDIMENT BEFORE IT LEAVES THE SITE OF ANY CONSTRUCTION.
 - BETWEEN OCTOBER 15 AND APRIL 15, A STOCKPILE OF SOIL SHALL REMAIN ON THE JOB SITE DURING THE COURSE OF CONSTRUCTION. CONTRACTOR SHALL USE STRAW BALES FOR CHECK DAMS AND FOR EROSION CONTROL PROTECTION DURING THE RAINY SEASON AS NECESSARY.
 - BETWEEN OCTOBER 15 AND APRIL 15, EROSION CONTROL MEASURES SHALL BE IN PLACE AT THE END OF EACH DAYS WORK.

- SEEDING PROCEDURE:**
- TEMPORARY SEED MIX SHALL CONSIST OF NATIVE SEEDS AND SHALL BE APPLIED AT RATE OF 140 POUNDS PER ACRE. SEED SHALL BE SUBMITTED TO LANDSCAPE ARCHITECT FOR REVIEW & APPROVAL.
 - BEFORE SEEDING, REMOVE WOOD CHIPS, ROCKS, AND DEBRIS FROM THE DISTURBED AREA. RAKE OUT SCARP TO PROVIDE A SMOOTH TRANSITION FOR EROSION CONTROL BLANKETS.
 - SEEDING - APPLY SEED AND FERTILIZER BY HYDROSEEDING.
 - MULCHING - AFTER HYDROSEEDING, APPLY 2" OF STRAW MULCH.
 - INSTALL EROSION CONTROL BLANKETS ON EXPOSED SLOPES.
 - INSTALL STRAW ROLLS.
 - IRRIGATION - SHALL BE USED SO THAT EFFECTIVE PLANT GROWTH IS ESTABLISHED AS SOON AS POSSIBLE. THE SOIL SHOULD BE KEPT CONTINUALLY MOIST UNTIL THE SEED GERMINATES (2-3 WEEKS) AND THE GRASS IS THREE INCHES (3") HIGH. THEN CONTINUE TO WATER ABOUT ONCE A WEEK OR AS REQUIRED UNTIL THE RAINY SEASON BEGINS. IRRIGATION SHALL BE CLOSELY MONITORED SO THAT IT WILL NOT CAUSE AN EROSION PROBLEM.
 - MAINTENANCE - THE CONTRACTOR SHALL COMMENCE WATERING THE COVERED AREAS WITHIN ONE WEEK AFTER SEEDING. THE WATERING WILL CONTINUE UNTIL THE GROUND COVER IS FULLY DEVELOPED AND AS REQUIRED. THE OWNER SHALL MONITOR, MAINTAIN, AND REPAIR ALL EROSION CONTROL MEASURES AS REQUIRED.
 - AUTOMATIC IRRIGATION IS NOT APPROVED.

- RUNOFF:**
- NO TURBID RUNOFF SHALL BE ALLOWED TO LEAVE THE SITE.
 - RUNOFF MUST BE PREVENTED FROM FLOWING OVER UNPROTECTED SLOPES.
 - KEEP RUNOFF AWAY FROM DISTURBED AREAS DURING GRADING AND RELATED ACTIVITIES.
 - SILT BARRIERS SHALL BE CONSTRUCTED ALONG THE BOTTOM OF ALL GRADED SLOPES. SILT DEPOSITS SHALL BE REMOVED AS NECESSARY TO PREVENT MORE THAN 12 INCHES OF ACCUMULATION.
 - EQUIPMENT FUELING, MAINTENANCE, AND CLEANING SHALL OCCUR IN A CONTROLLED LOCATION. ALL SPILLS SHALL BE CLEANED UP IMMEDIATELY.
- SPOILS:**
- SPOILS MUST BE REMOVED PROMPTLY AND STOCKPILING OF FILL MATERIALS MUST BE AVOIDED WHEN RAIN IS FORECAST. IF RAIN THREATENS, STOCKPILED SOILS AND OTHER MATERIALS SHALL BE COVERED WITH A TARP OR OTHER WATERPROOF MATERIAL.
 - EXCAVATED MATERIAL SHALL BE REMOVED TO AN APPROVED DISPOSAL SITE OR DISPOSED OF ON-SITE IN A MANNER THAT WILL NOT CAUSE EROSION.

EROSION CONTROL PLAN

SCALE: 1" = 20'



ATTACHMENT I
Erosion Control Plan