

San Mateo County

Off-leash Dog Pilot Program Data Summary:

Monitoring Period 9 (January 2023 – February 2023)

Pilot Program Data Collection

Table 1. Overall Dog Monitoring Results at Quarry Park as measured for January 2023 and February 2023.

	Standards	Quarry Park
Presence of dog waste ¹	No more than 20 occurrences in one month	14 instances per month
Harassment of wildlife	Dogs observed chasing or harassing wildlife two times over a 60-day period	0 instances
Dog entry to sensitive areas	No dogs observed entering Parks defined and signed sensitive areas	0 instances
Dogs traveling off-trail	Dogs observed traveling at 10 feet or more off trail	0 instances
Leash compliance for on-leash trails ²	70% of parties with dogs will have their dogs on a leash when using an on-leash trail	100% leash compliance
Interactions with dogs and visitors	Any dog is observed exhibiting unwelcome behavior(s) to other dogs or visitors 10 times per month	0 instances

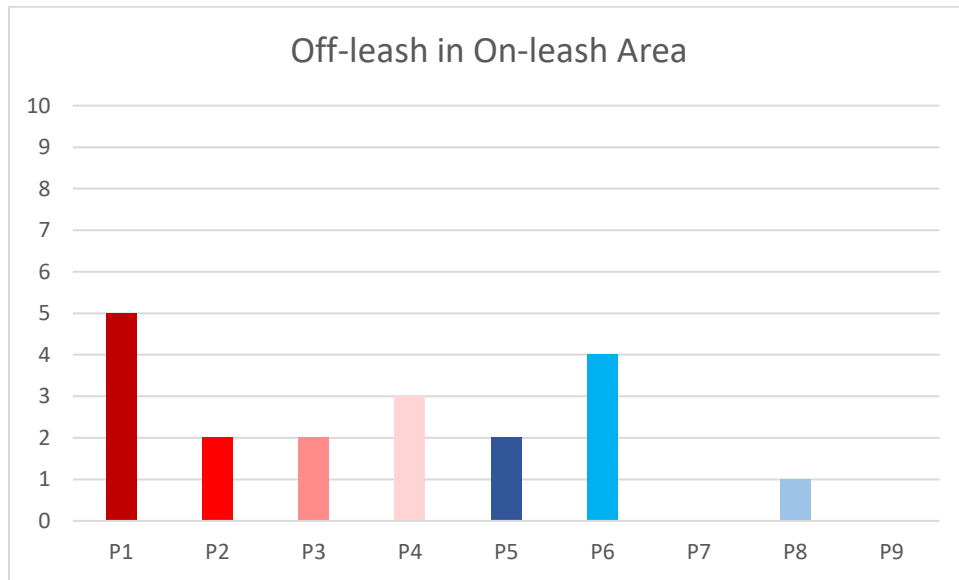
¹ “Per month” data for this row was calculated by averaging the total observations for each month indicated in table 2.

² Leash compliance data was calculated as the average percentage of “on-leash dogs in on-leash trails” out of “all dogs in on-leash trails” for the monitoring period.

Graph 1. Dog Monitoring Results (excluding “Presence of Dog Waste”) at Quarry Park as measured for January 2023 and February 2023.

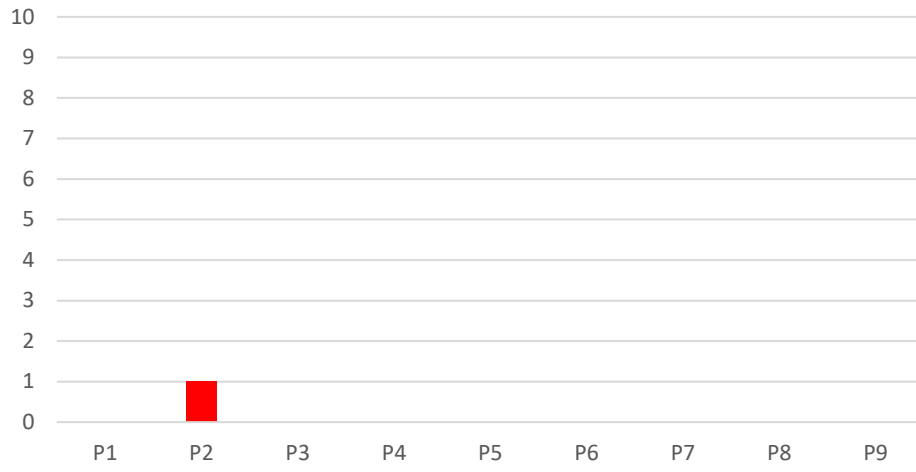


Graphs 2a-d. Change in Dog Monitoring Results (excluding “Presence of Dog Waste”) at Quarry Park throughout all monitoring periods³.

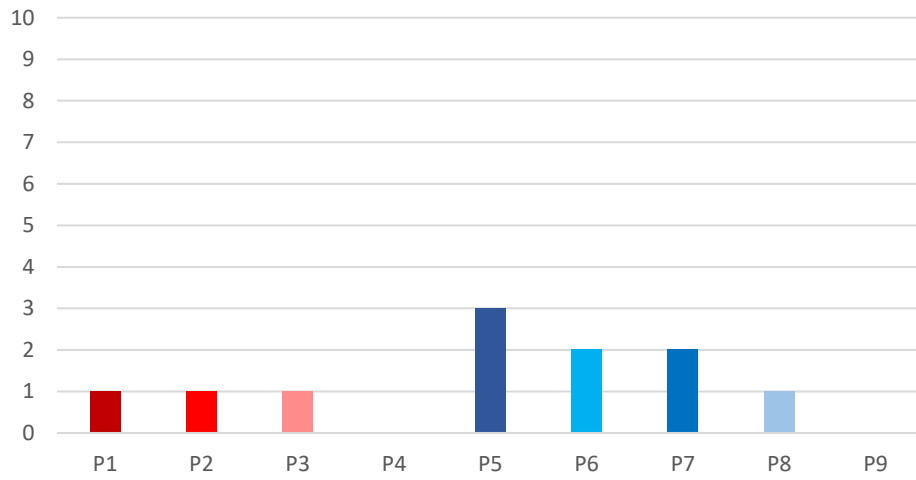


³ “Wildlife harassment” is also excluded, due to there being no observed instances for any of the monitoring periods.

Dog in Prohibited Sensitive Area



Dog Off-Trail



Public Conflict

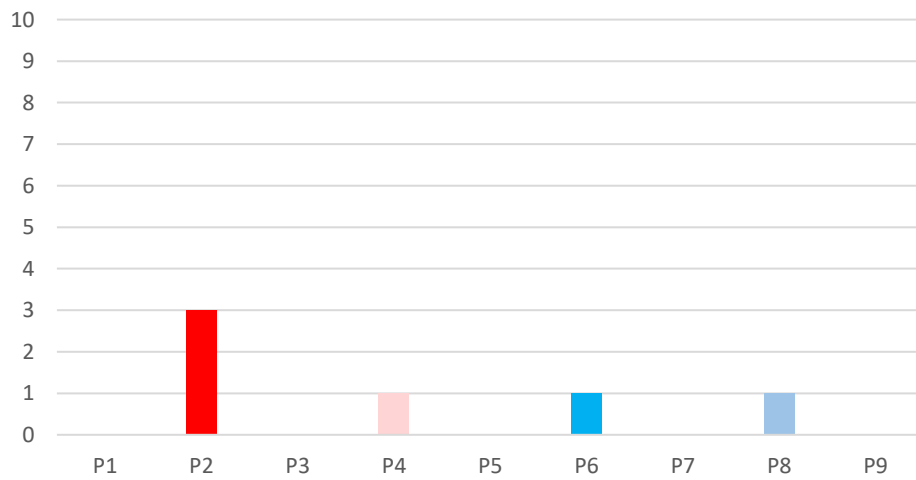


Table 2. Monthly Dog Monitoring Results for “Presence of Dog Waste” and “Interactions with Dogs and Visitors” at Quarry Park as measured for January 2023 and February 2023.

		January	February	Total
Quarry Park	Presence of Dog Waste	8 instances	19 instances	27 instances
	Interactions with Dogs and Visitors	0 instance	0 instances	0 instance

Graph 3. Dog Waste Comparison at Quarry Park as measured for January 2023 and February 2023.

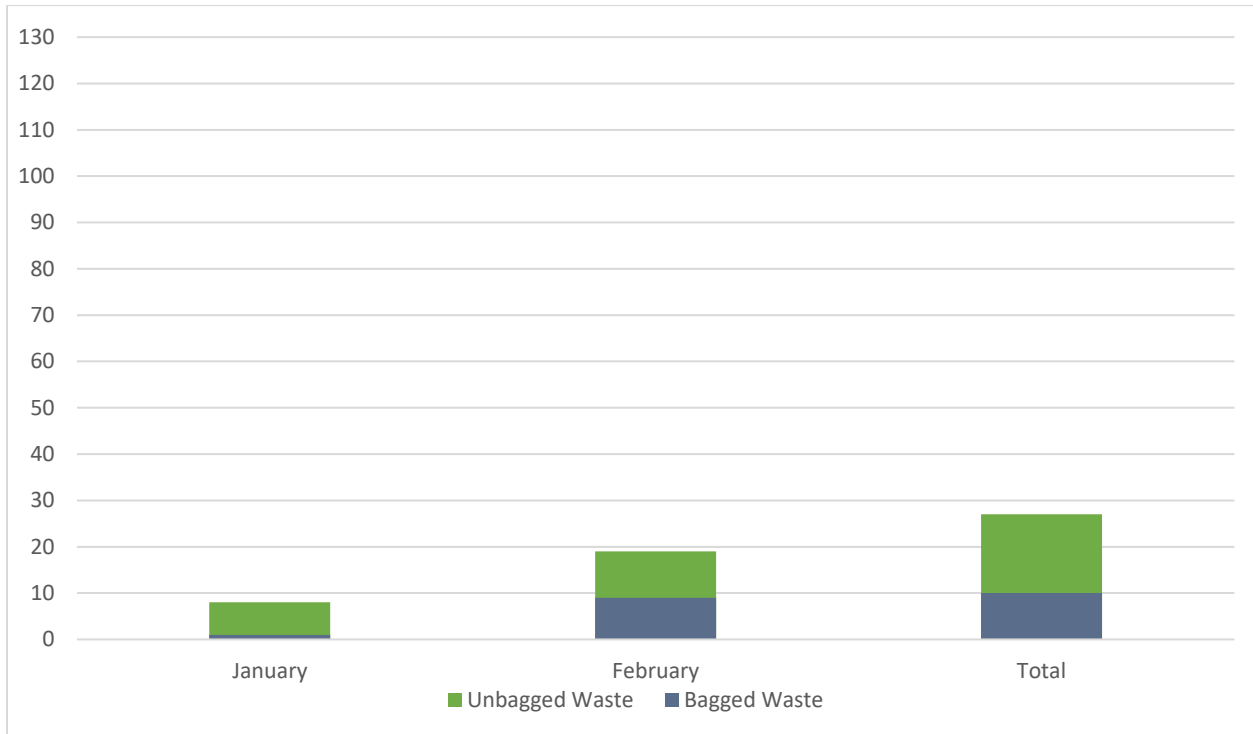


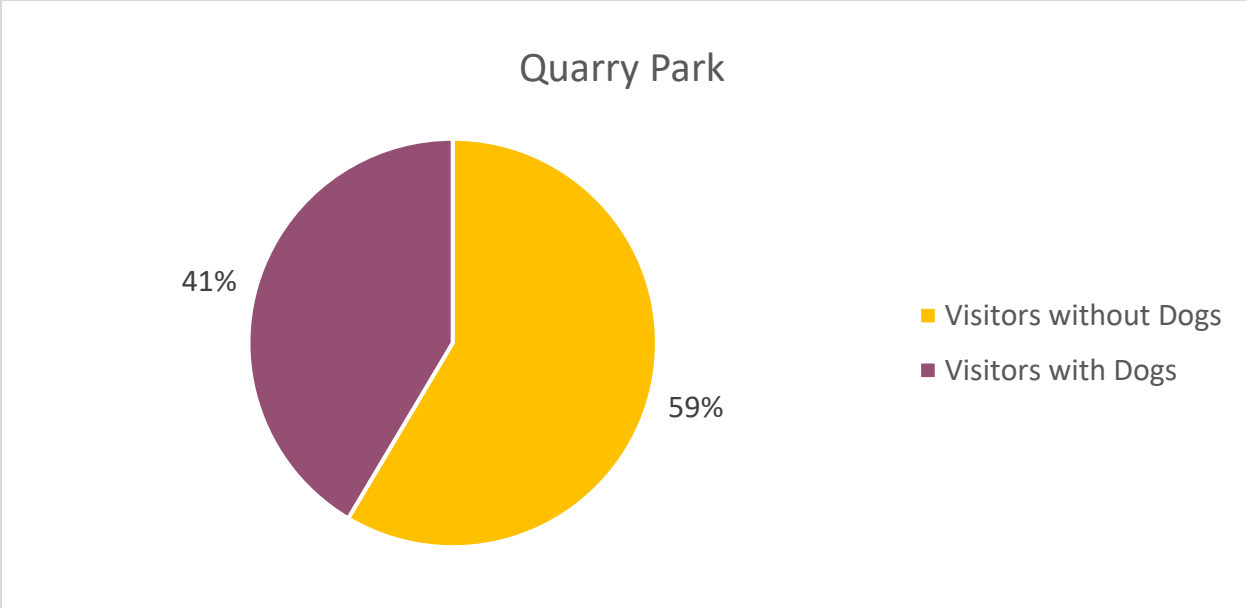
Table 3. Visitor Demographics at Quarry Park as measured for January 2023 and February 2023.

	Quarry Park	
Total visitors overall	345	
	Total	% of visitors overall
Visitors without dogs	202	59%
Visitors with dogs	143	41%

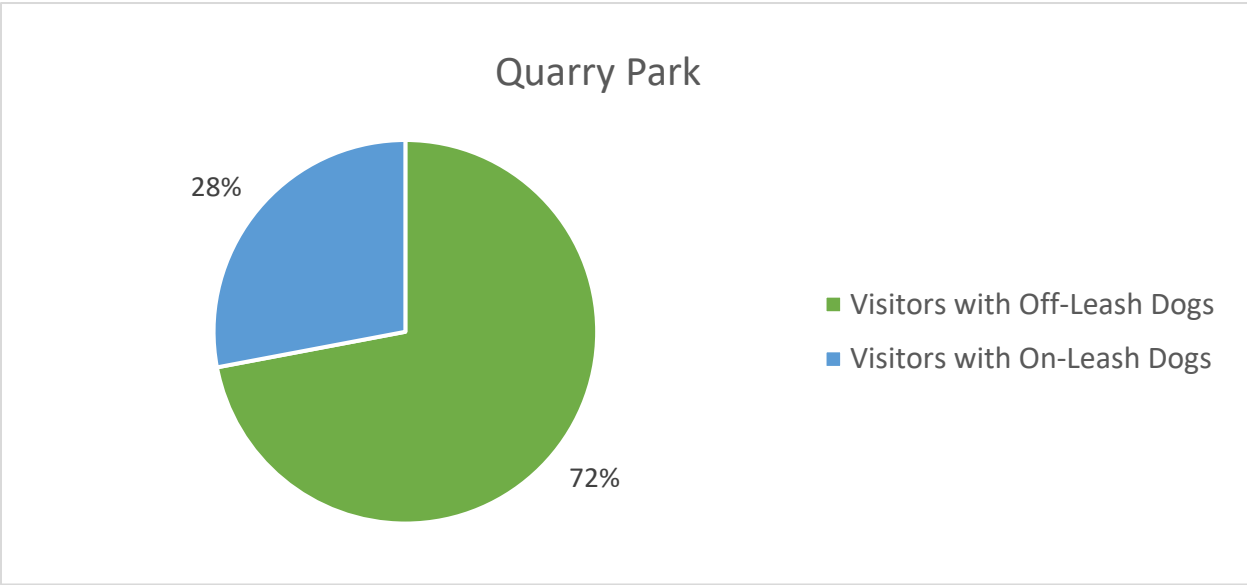
Table 4. Demographics of Visitors with Dogs at Quarry Park as measured for January 2023 and February 2023.

	Quarry Park	
Total visitors with dogs	143	
	Total	% of visitors with dogs
Visitors with off-leash dogs	103	72%
Visitors with on-leash dogs	40	28%

Graph 4. Percentage of Visitors with or without Dogs out of Total Visitors at Quarry Park as measured for January 2023 and February 2023.

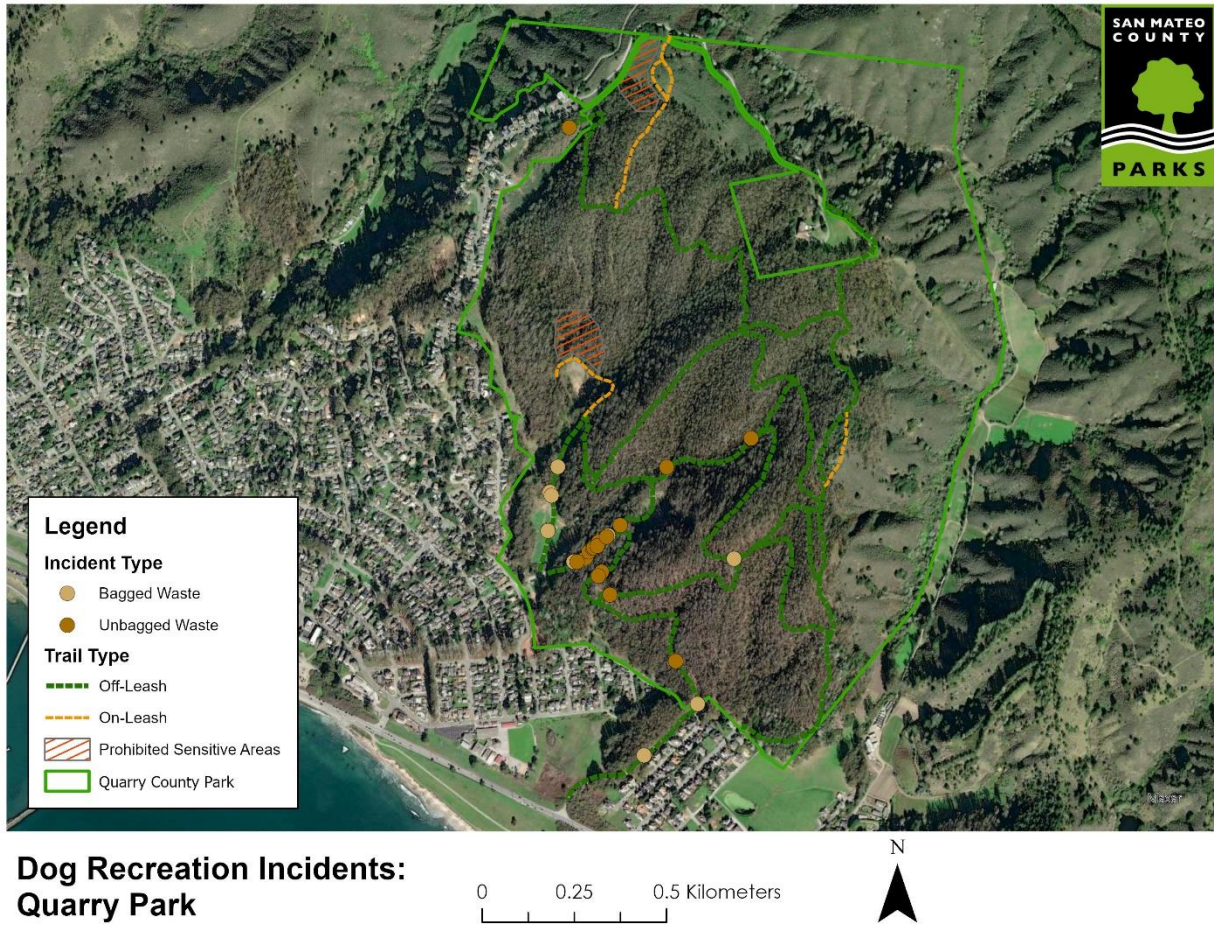


Graph 5. Percentage of Visitors with Off-Leash or On-Leash Dogs out of Visitors with Dogs at Quarry Park as measured for January 2023 and February 2023.



I. Maps

Map 1. Dog Waste Observations at Quarry Park as measured for January 2023 and February 2023.



II. Summary of Results

All criteria standards were met during Monitoring Period 9. When compared to Monitoring Period 8, leash compliance improved from 50% to 100%, and instances of dogs traveling off-trail decreased from one instance to zero instances for Monitoring Period 9. Instances of harassment of wildlife, entry into prohibited sensitive areas both remained at zero, while public conflicts decreased from one instance to zero instances.

In terms of visitor demographics, Quarry Park had 345 total visitors observed during Monitoring Period 9, with 41% of these visitors bringing dogs and 59% visiting without dogs. Seventy-two percent of visitors with dogs at Quarry Park let their dogs off-leash, while 28% kept them on-leash. In comparison to the previous monitoring period, the proportion of visitors without dogs to visitors with dogs decreased slightly from 71% of all observed visitors to 59%. The ratio between the visitors with off-leash dogs to on-leash dogs shifted from 66.9% off-leash and 33.1% on-leash in Monitoring Period 8 to 72% off-leash and 28% on-leash in Monitoring Period 9. To date, no evidence exists to indicate that the off-leash dog recreation pilot program has adversely impacted people's ability to enjoy Quarry Park without dogs.

III. Courses of Action

In accordance with the Off-leash Dog Recreation Pilot Program's IS/MND, the Department has posted the following sign in Quarry Park:



Quarry Park Off-Leash Dog Pilot is Underway!

San Mateo County Parks is conducting a one-year pilot program to explore allowing dogs and their owners to enjoy off-leash use of most trails in Quarry Park.

Not Disposing of Dog Waste Can Impact Off-Leash Pilot Success

For two consecutive monitoring periods the amount of dog waste left on trails has exceeded the pilot standard. For the pilot to succeed and for off-leash recreation to continue, dog waste must be picked up, bagged, and disposed of in a trash can.

Also remember:

- Keep dogs on trails and out of sensitive habitat.
- No more than three dogs per person (with a leash for each dog) and no more than two off leash.
- Keep dog(s) within 25' and under voice/sight control.

Let's all work together to keep off-leash dog recreation in the park!

Learn more about the Pilot Program
<https://www.smcgov.org/parks/leash-dog-pilot-program-quarry-park>

Leash Your Dog in Designated Areas

Look for signs:

- Off-leash dogs OK
- Dogs on leash OK
- No dogs

The Department has also installed two additional dog waste stations at Mirada Surf East.

As there have been two monitoring periods during the pilot program where dog waste observed exceeds the standard that was set, the Department will continue monitoring, but will need to re-evaluate the standards set and adjust management options accordingly. The figure below is included in the adaptive management plan for the off-leash dog recreation pilot, identifying the decision-making that the Department will need to make regarding the pilot and appropriate management.

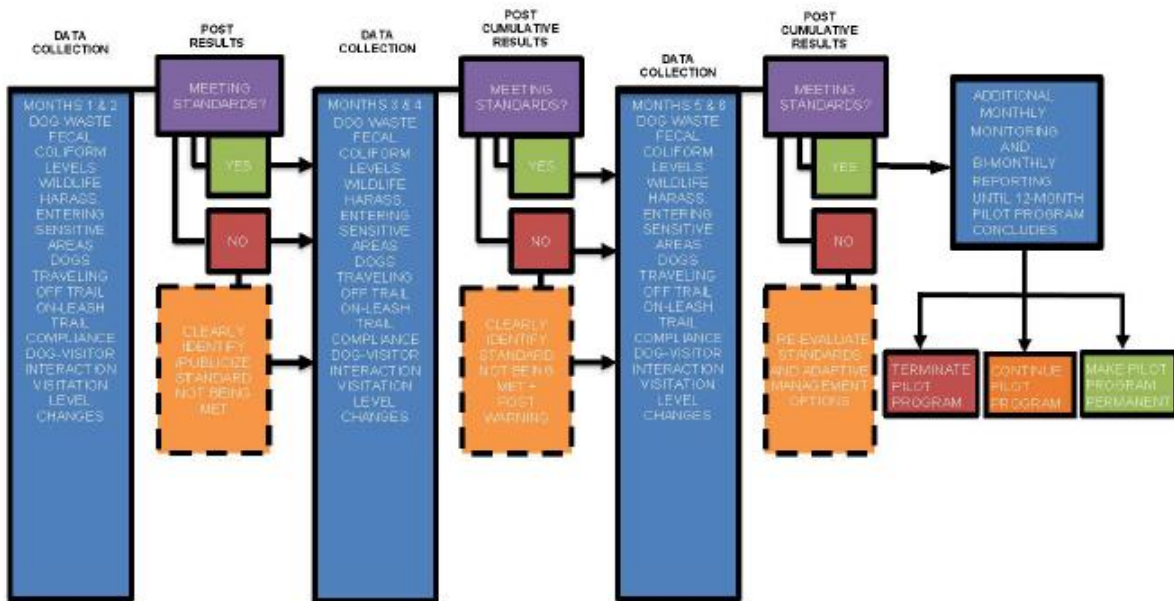


Figure 4. Adaptive Management Decision Flow Chart