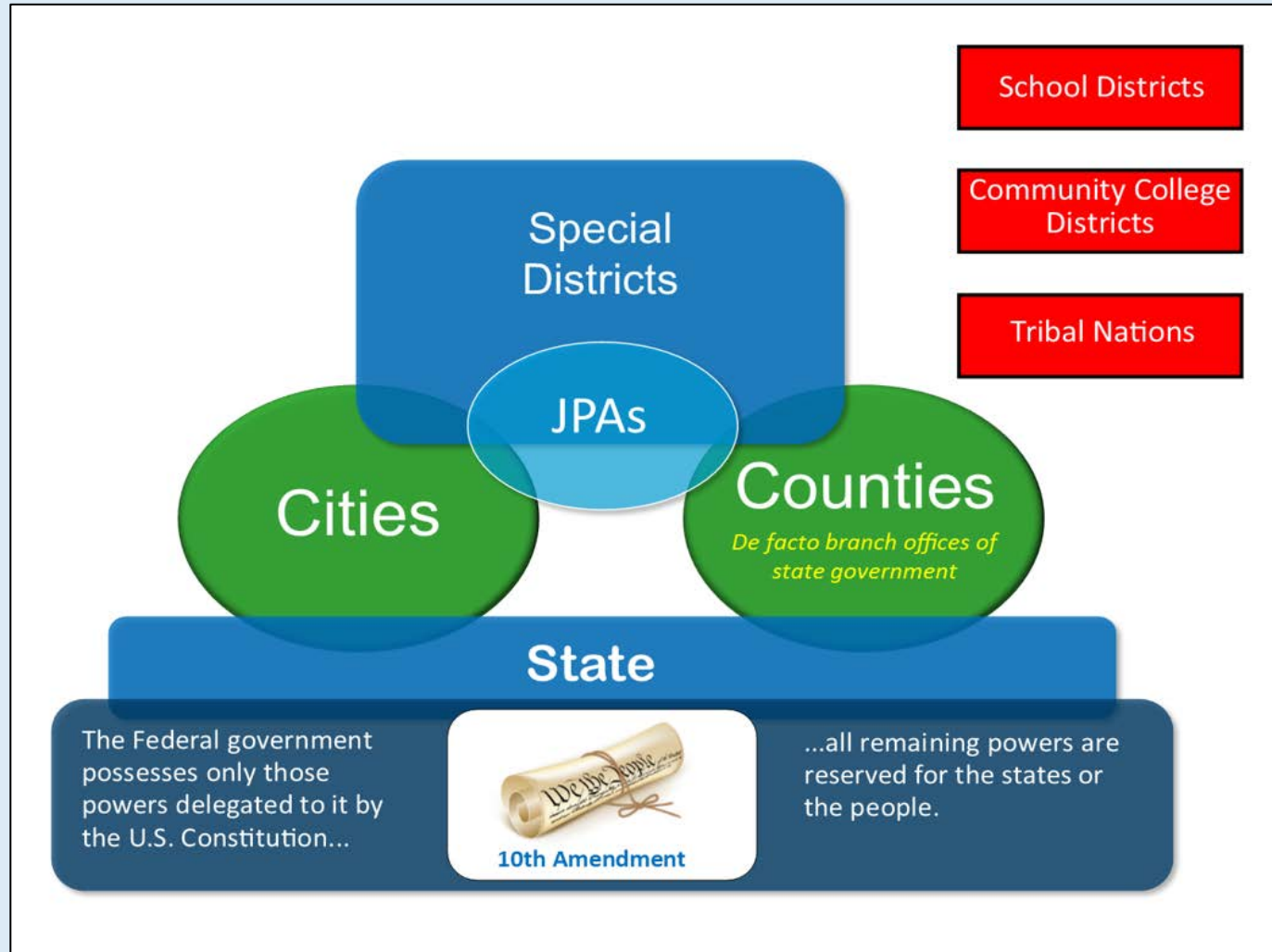




SAN MATEO COUNTY
&
COUNTY OF SAN MATEO



Where Does the County Fit?





The Geography



57.7 MILES
OF
COASTLINE



The Jurisdictions

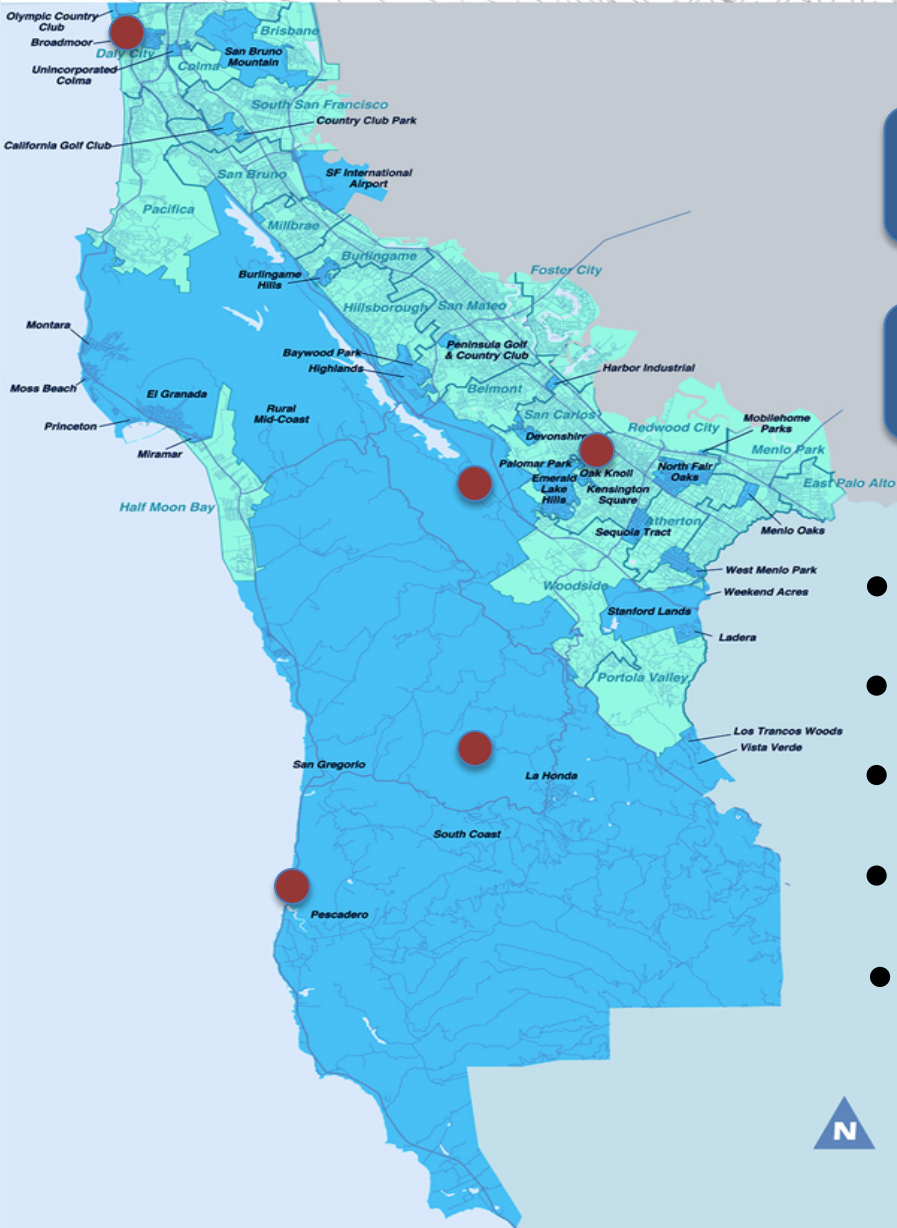


20 CITIES

BURLINGAME AVENUE



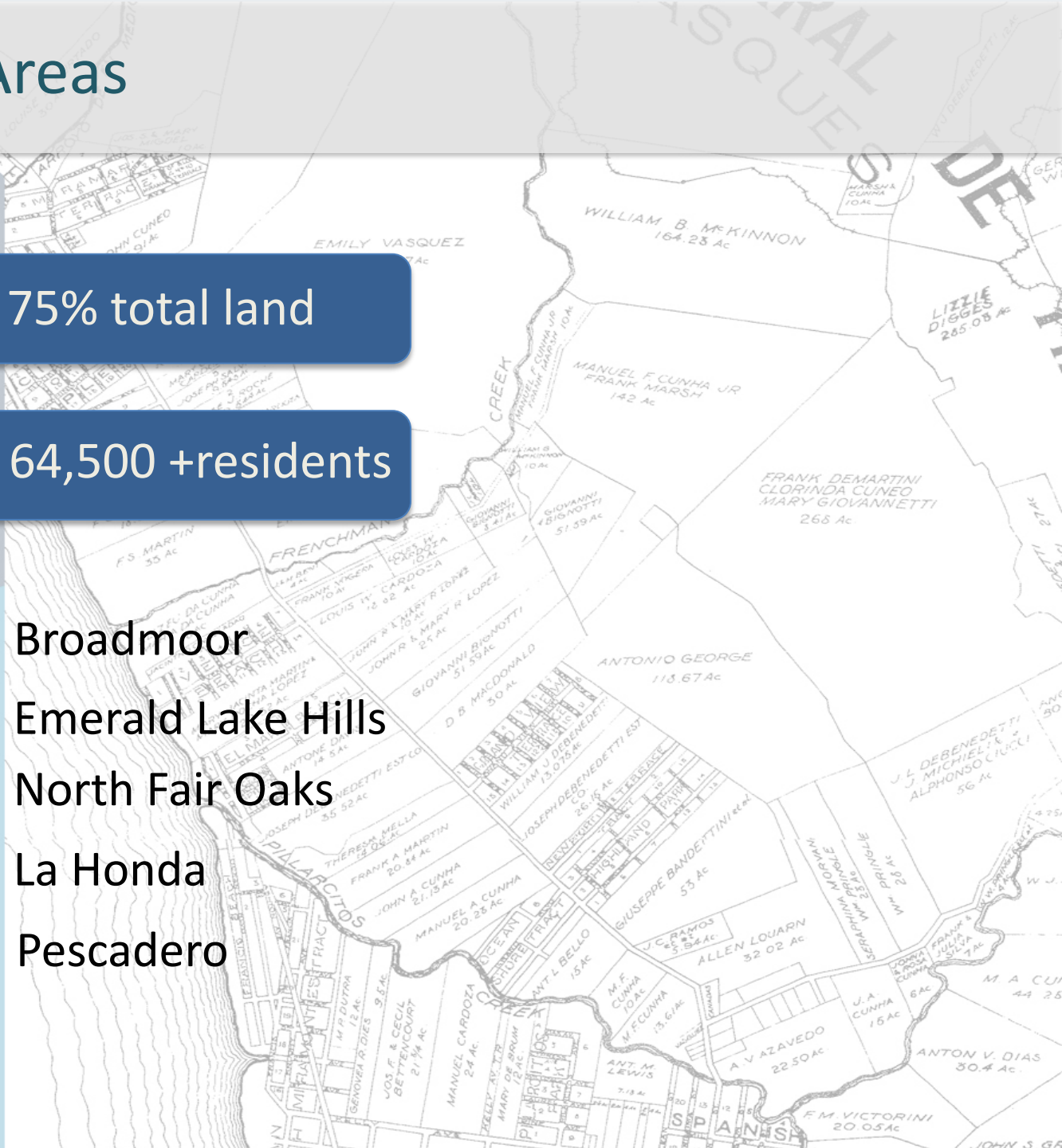
Major Unincorporated Areas



75% total land

64,500 + residents

- Broadmoor
- Emerald Lake Hills
- North Fair Oaks
- La Honda
- Pescadero





Where We Learn

183
PUBLIC SCHOOLS





Who We Are

57.1%
White

32.8%
Asian

23.8%
Hispanic

5.0% Two
or More
Races

2.7%
Black

729,181
PEOPLE





Prosperity

- **\$136,837 median household income**
- **\$1.6 million Median Housing Value (as of July 2023)**
- **93.4% of Households have Broadband Internet**

**ONE OF THE
WEALTHIEST
COUNTIES**





Wide Disparities Exist

WEALTH
MASKS WIDE
DISPARITIES



COUNTY OF SAN MATEO NAVIGATION CENTER

County of San Mateo Board of Supervisors

Dave Pine | Carole Groom | Dan Horsley | Warren Slocum | David Canepa



CONTRACTOR
XL Construction

ARCHITECT/STRUCTURAL
Office of Charles Bloszies

CIVIL
BKF Engineering

MECHANICAL/PLUMBING/FIRE PROTECTION
Air Systems Inc.
EcoFire Sprinklers

ELECTRICAL
Rosendin Electric

Want to learn more?
SMCPDU.ORG



COUNTY OF SAN MATEO
COUNTY MANAGER'S OFFICE

XL CONSTRUCTION

PDU
PROJECT
DEVELOPMENT UNIT
COUNTY OF SAN MATEO

OFFICE OF CHARLES F. BLOSZIES FAIA

SOBRATO
Philanthropies



County Government

Chief Responsibilities

SAFETY NET
PUBLIC SAFETY
MUNICIPAL SERVICES

21 Departments

6,500+
EMPLOYEES

\$4.2 Billion
FY 2023-25 2-YR BUDGET





Elected Officials

Board of Supervisors
(Five Members)

Assessor/County Clerk-Recorder/Chief Elections Officer

Controller

Coroner

District Attorney

Sheriff

Tax Collector/Treasurer



Other Services





Health

Health

San Mateo Medical Center

- In-home Care
- Public Health
- Basic medical/mental health care for youth and adults in custody
- Emergency medical services
- Aging/Adult Services
- Environmental Health
- Restaurant inspections/hazardous waste collection

Other Health Services

- 228 bed hospital
- 11 clinics
- Long term care
- Psychiatric services
- Mental Health Treatment
- Substance Abuse Treatment

Behavioral Health & Recovery



Public Assistance

Safety Net Services

Human Services Agency

Workforce Development

Department of Housing

Department of Child Support Services

- Social Service Programs
- Employment Services
- Foster Youth
- Child Protective Services
- Veterans Services
- Establishes and Enforces Child Support Orders
- Connects low-income job seekers with employers
- Increases access to affordable housing



SAN MATEO COUNTY

Public Safety

Sheriff

Law Enforcement
Court Security
Operate Jails

Probation Department

Probation Supervision
Operate Juvenile Hall

Safety Budget

Administration of Justice

District Attorney
Private Defenders
County Court Support

Public Safety
Communications
Fire Protection
Dept. of Emergency
Management

Emergency Response

Investigate cause
and manner of death

Coroner's Office



Serving the Unincorporated Areas

Municipal Services

Public Works

Parks

Planning and Building

Project Development Unit

Office of Sustainability





Where Does the Money Come From?

\$7.7 BILLION TOTAL 2-YEAR BUDGET

Intergovernmental (state/federal)

Taxes: Property and Sales

Charges for Services

Investments, Permits, License,
Other Revenue Sources

Unspent carry-over from prior year



COUNTY OF SAN MATEO

